



3D factory simulation with high-end capabilities



Accurate factory predictions

A data-driven, evidence-based method to predict how changes will impact production

Minimize risks and disruptions

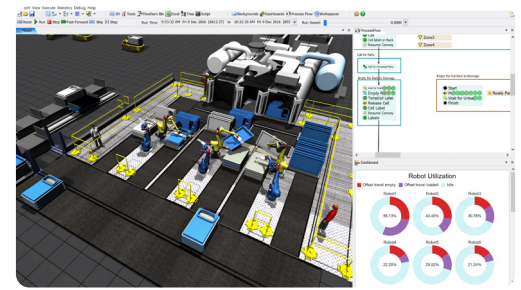
Test “what if” scenarios in a digital model without disrupting real-world operations

Tell the factory story

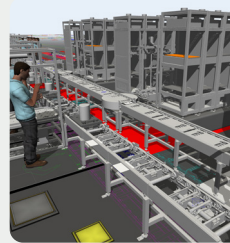
Realistic 3D visuals and process steps to share the factory story with stakeholders

What is FlexSim?

FlexSim is easy-to-use 3D discrete event simulation software with high-end capability. It empowers anyone to transform their existing data into accurate predictions, from new factory designs to reconfiguring existing lines. Test “what if” scenarios in a risk-free virtual environment and uncover more profitable decisions.

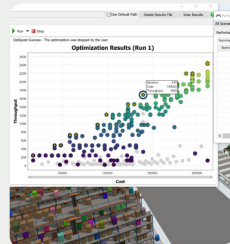


Capabilities



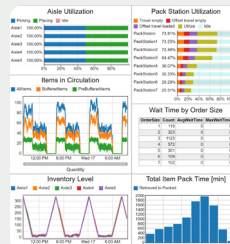
Reduce production costs

FlexSim helps you study alternative investment ideas and cost reduction plans. Test methods for allocating resources more efficiently, reduce waiting time and queue sizes, and minimize the negative effects of breakdowns.



Optimization and validation

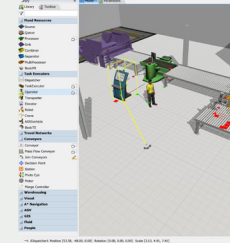
Put any scenario to the test, run many replications, and see how the proposed changes align with your organization's KPIs. Real-world production systems have competing goals – FlexSim helps you see the tradeoffs between business objectives to find optimal solutions.



More informed factory decisions

FlexSim models provide a complete picture of the production environment, with detailed process steps, accurate production data, and realistic 3D visuals. It accounts for real-world variability to make accurate predictions about the effects of proposed changes.

Features



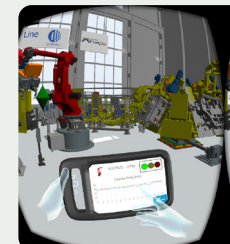
Faster, easier model building

With drag-and-drop layout, a full library of objects with pre-built logic, and a code-free logic-building environment, FlexSim significantly reduces the time it takes to build accurate simulation models.



Industry-specific modules

Go beyond the assembly line to consider material handling, inventory, logistics, and more. FlexSim comes pre-packaged with modules to add powerful capabilities for conveyor systems, AGVs, warehousing, supply chain, and healthcare.



Industry 4.0 + Digital Twin ready

FlexSim features an open architecture, robust database connectivity, and advanced communication features to support digital transformation initiatives. It's also VR-enabled and supports AI and reinforcement learning.



Organizations can't afford mistakes or inaccuracies in their production systems. Optimize your factories, warehouses, and supply chains before you implement changes in real life, saving your company time and money.

Learn more: autodesk.com/products/flexsim/overview